

Route: TT wk 1.2 35a

Summary

Route Distance: 19.2 km

Estimated Time: 6:32

Total Ascent: 629 m

Total Descent: 620 m

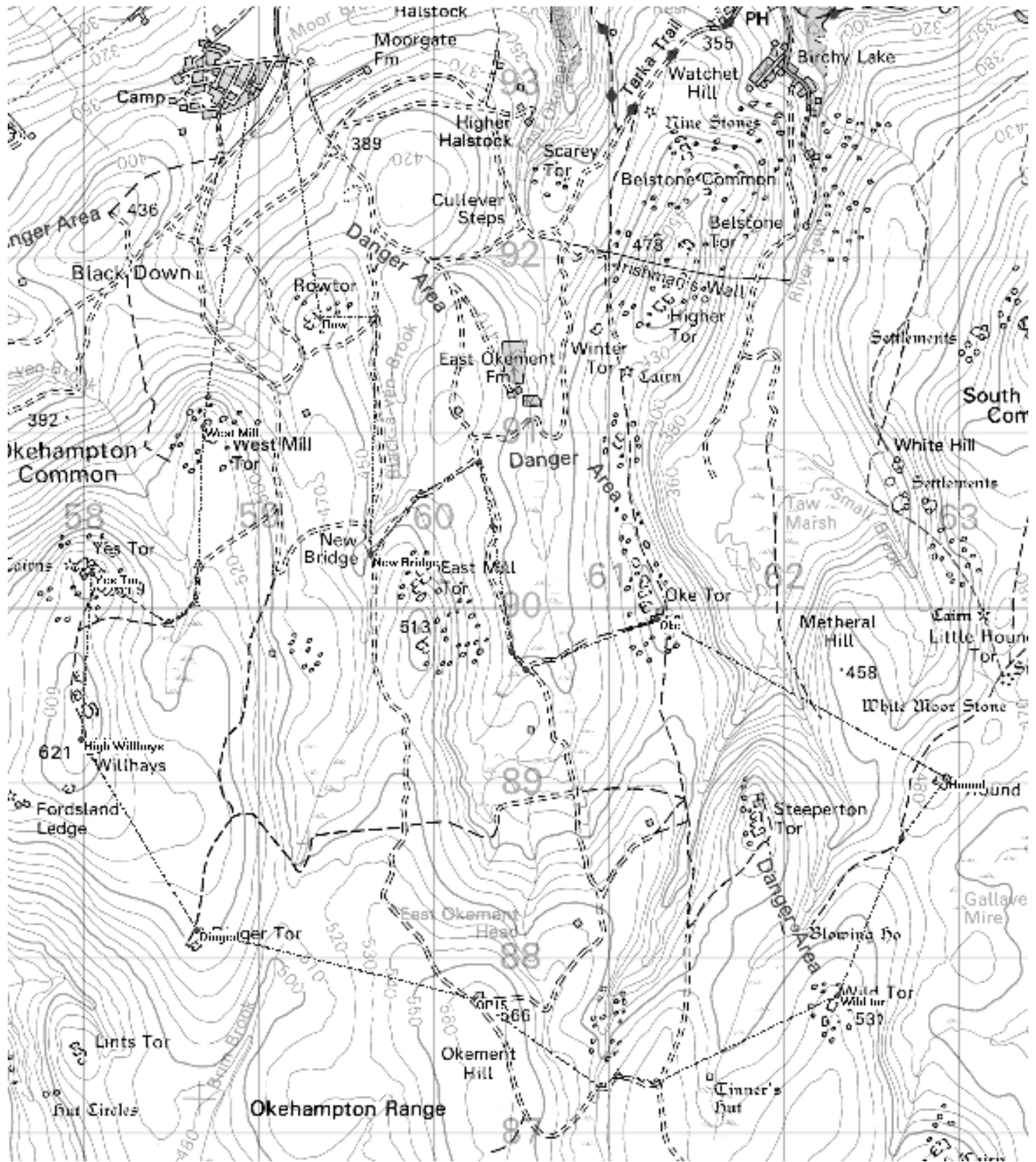
Elevation Profile

Waypoints

Leg	Name / Position / Elevation	Bearing	Distance	Ascent	Time	Comments	Photo
0	Camp SX 59140 93045 339 m						
1	Row SX 59340 91655 461 m	172°M	1.4 km	122 m	0:36		
2	New Bridge SX 59630 90295 450 m	168°M	1.69 km	40 m	0:32		
3	Oke SX 61265 89935 452 m	102°M	2.88 km	63 m	0:55		
4	Hound SX 62920 89025 483 m	119°M	1.89 km	109 m	0:43		
5	Wild tor SX 62300 87785 522 m	207°M	1.4 km	54 m	0:29		
6	OP15 SX 60220 87765 564 m	269°M	2.39 km	92 m	0:50		
7	Dinger SX 58635 88155 552 m	284°M	1.63 km	50 m	0:32		
8	High Willhays SX 57975 89245 620 m	329°M	1.27 km	68 m	0:28		
9	Yes Tor SX 58035 90195 613 m	004°M	952 m	24 m	0:18		
10	West Mill SX 58670 91035 523 m	037°M	1.73 km	3 m	0:29		
11	Camp SX 58945 93005	008°M	1.99 km	3 m	0:34		

348 m					
Totals:		19.2 km	629 m	6:32	

Overview Map



© 2006 Crown Copyright; Ordnance Survey, Licence Number PU 100034184

Prepared with Memory-Map