

# Route: TT wk 1.2 35b

## Summary

Route Distance: 19.7 km  
Total Ascent: 760 m

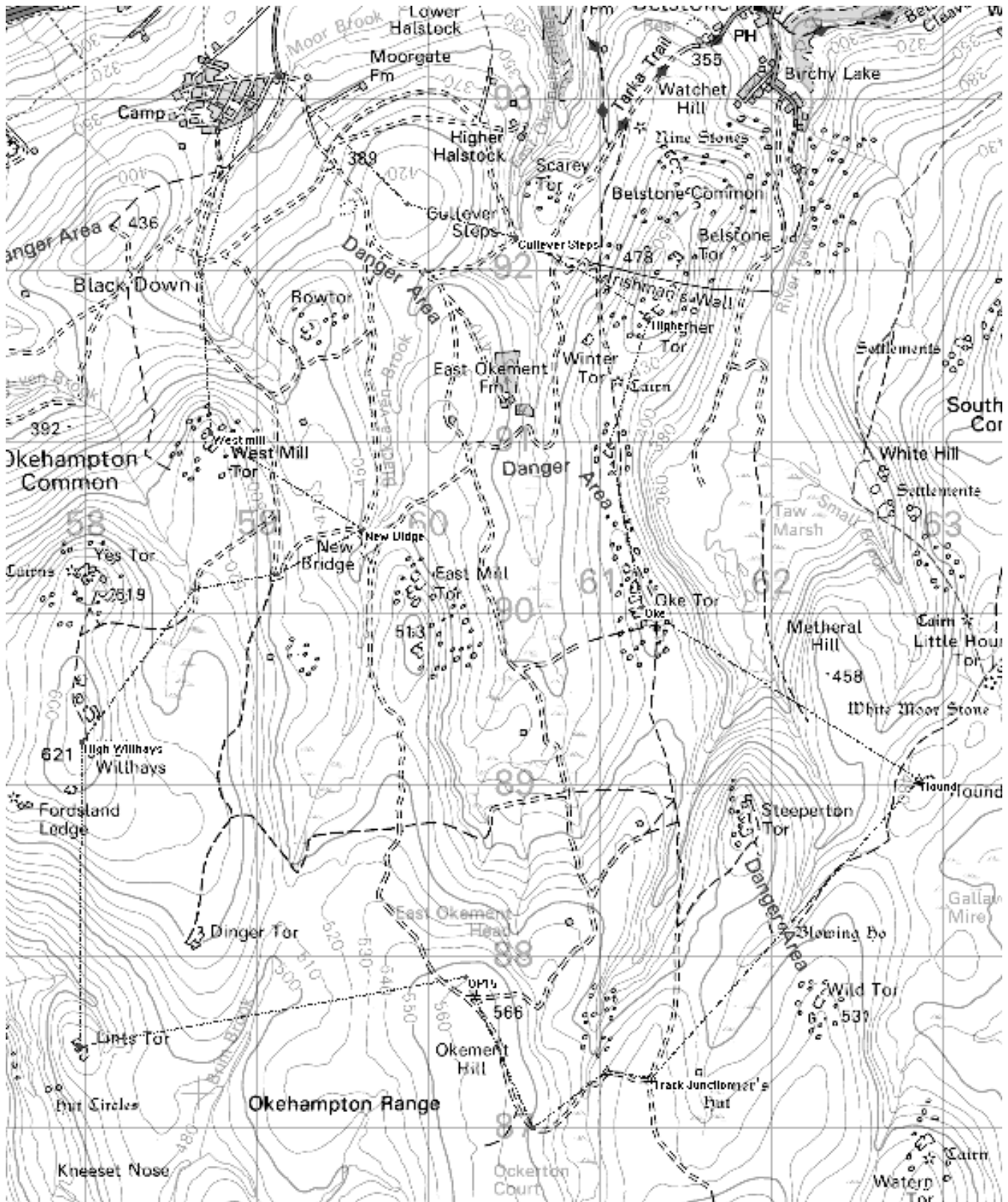
Estimated Time: 6:52  
Total Descent: 749 m

## Elevation Profile

## Waypoints

Leg	Name / Position / Elevation	Bearing	Distance	Ascent	Time	Comments	Photo
0	Camp SX 59115 93130 336 m						
1	Cullever Steps SX 60500 92185 355 m	124°M	1.72 km	87 m	0:38		
2	Higher SX 61275 91715 458 m	121°M	911 m	105 m	0:26		
3	Oke SX 61235 90035 453 m	181°M	1.73 km	27 m	0:32		
4	Hound SX 62850 89025 483 m	122°M	1.91 km	113 m	0:43		
5	Track Junction SX 61290 87285 534 m	222°M	2.34 km	77 m	0:47		
6	OP15 SX 60205 87875 557 m	299°M	1.77 km	55 m	0:35		
7	High Willhays SX 57970 89245 620 m	301°M	4.06 km	215 m	1:31		
8	New Bidge SX 59605 90485 450 m	053°M	2.16 km	1 m	0:37		
9	West mill SX 58720 91045 523 m	302°M	1.05 km	76 m	0:25		
10	Camp SX 58945 93015 347 m	006°M	2.01 km	3 m	0:34		
Totals:			19.7 km	760 m	6:52		

## Overview Map



© 2006 Crown Copyright; Ordnance Survey, Licence Number PU 100034184

Prepared with Memory-Map